

Asotin County Conservation District Newsletter

720 Sixth Street, Suite B * Clarkston, Washington * (509) 758-8012



6TH ANNUAL TREE SALE



The ACCD's 6th Annual Tree Sale will be held March 21st and 22nd at the District Office. There are limited quantities available so shop early! There are informational sheets available for each species at the District office. You can also purchase species with a star (*) by the bundle at a discounted rate. For more information, contact Megan at the District.

The Master Gardeners will have helpful tips and handouts available and be onsite from 10:00 am to 2:00 pm on Friday.

Choke Cherry	Bareroot	\$1.00
Woods Rose	Bareroot	\$1.00
Serviceberry	Bareroot	\$1.00
Austrian Pine*	Bareroot	\$1.00
Ponderosa Pine*	Bareroot	\$1.00
Blue Spruce*	5 Cu. In. Plug	\$1.00
Douglas Fir*	5 Cu. In. Plug	\$1.00
Oregon Grape	Bareroot	\$1.50
Golden Currant	Bareroot	\$1.50
Rocky Mountain Juniper*	Bareroot	\$1.50
Western Larch	Bareroot	\$1.50
Quaking Aspen*	Bareroot	\$1.75
Bur-English Oak	20 Cu. In. Plug	\$2.25
Mountain Boxwood	20 Cu. In. Plug	\$2.25
Mock Orange (Syringa)	20 Cu. In. Plug	\$2.25
Sugar Maple	20 Cu. In. Plug	\$2.50
Hybrid Poplar*	20 Cu. In. Plug	\$2.50
Purple Lilac	20 Cu. In. Plug	\$2.50
Red Flowering Currant	20 Cu. In. Plug	\$2.50

DON'T FORGET YOUR 2008 AGRICULTURAL BURN PERMIT!

Just a reminder that burning by commercial agricultural operations requires a permit except when burning orchard prunings, natural vegetation along fence lines, irrigation and drainage ditches or natural vegetation blown by the wind. A grower must still comply with their fire protection authority's notification/ approval process prior to igniting any outdoor fire even if an air quality permit is not required.

Two types of commercial agricultural permits are available. Spot burn permits, which are available through the District, allow burning of up to 10 acres total area of unforeseen and unpredictable small areas such as small weed patches, spots of heavy residue, and equipment plugs and dumps. The cost is \$25 and the permit is good for the entire calendar year. Field burn permits are issued for any burning which is definable and predictable.

Any individual burn area, which consists of over 5 contiguous acres, would be considered a field and requires a field permit. Permits are issued by the Dept. of Ecology and cost \$2.25 per acre. Applications are available at the District office.

Board of Supervisors

Chairman

Keith Ausman

Vice-Chair

Dan Sangster

Auditor

Jerry Hendrickson

Secretary

Ron Scheibe

Member

Rich Witters

Associate Supervisors

Barb Appleford

Brit Ausman

George Brott

Dallas Dodd

Don Dotson

Brad Forgey

Jay Holzmiller

Elaine Nagle

Dan Schlee

Matt Seibly

District Staff

Megan Stewart

Cheryl Sonnen

Sandy Cunningham

Pat Worle

NRCS Staff

Jim Schroeder

Courtney B. Smith

Board Meetings

All District Board meetings are open to the general public and are normally held on the Thursday of the first full week of the month and the Thursday of the third full week. Meetings begin at 6:30 p.m. during the winter (Nov - Mar) and at 7:30 p.m. during daylight savings time (Apr - Oct). Meetings are held at the District office located at 720 6th Street, Suite B, in Clarkston.

NEW TIMELINE FOR EQIP FUNDING

By: Jim Schroeder

The Environmental Quality Incentive Program (EQIP) will be changing with the new farm bill legislation. Those changes at this point, and when they will occur, are an unknown. One thing that is known is that the timeline for applications and contracting is changing. The cutoff for applications for 2009 funding is July 15th this year.

Program practice lists and cost share rates are to be finalized and posted on the NRCS website by June 1st. These changes are being made to allow field staff additional time to complete much needed fieldwork to assess producer's proposals. In the past, application deadlines in the late fall or winter, allowed little time for fieldwork with planning being completed through the fine art of "staring at maps" and "napkin drawings". The ability to assess project complexity and needs in the field before writing conservation plans and developing contracts should benefit the agency and its cooperators. NRCS may not have all the practice designs done before contracting is completed, but we should definitely have a better feel for what's being proposed than in the past.

There will be a few new practices and changes made to the existing funding pools. Do not wait until the end of the year to sign up for EQIP or you may be SOL (favorite acronym). Contact NRCS staff for more information.

Salmon Recovery Projects

The District is looking for projects that benefit steelhead in priority streams in the County. These priority areas include Asotin Creek and it's tributaries, George Creek and it's tributaries, Alpowa Creek, Couse Creek, Tenmile Creek and the Grande Ronde tributaries.

Projects should provide significant benefit to steelhead populations and include instream habitat improvement, removal of passage barriers, riparian improvements and projects that increase instream flow. If you have a project in mind or would like more information, contact Cheryl at the District.



WANTED: COST-SHARE PROJECTS



Do you have a project that is eligible for District cost-share? If so, let the District help you!

The District has cost-share funds available for several Best Management Practices, as listed on the next page. If you are interested in utilizing the cost-share program, please contact the District staff for more information regarding rates, eligibility and restrictions that may apply.

We can help you with technical and financial assistance for projects. If you have an area of concern, we can help you find the right solution.



The District is a non-regulatory agency
and all programs are voluntary.



ELIGIBLE PRACTICES & COST-SHARE RATES

Practice Name	Component	Unit	Unit Cost	Rate	Cost-Share	Comments
Pipeline*	Hydrant, Frost Free	EA	\$85.00	75%	\$63.75	
	Pipeline, Plastic, Installed	FT	\$3.50	75%	\$2.63	
	Pipeline, Steel, Installed	FT	\$5.50	75%	\$4.13	
	Difficult Terrain, (addition to cost)	FT	\$1.50	75%	\$1.13	
Pumping Plant*	Pump	EA	\$5,000.00	75%	\$3,750.00	
	Pump, Hydraulic Ram	EA	\$500.00	75%	\$375.00	
	Solar Pump with solar panel	EA	\$5,000.00	75%	\$3,750.00	
Spring Development*	Spring Box and collection system	EA	\$1,500.00	75%	\$1,125.00	
Watering Facility*	Tank, Storage Cistern, Installed	EA	\$5,000.00	75%	\$3,750.00	
	Trough, Installed w/appurtenances	GAL	\$2.50	75%	\$1.88	Trough is nte 1000 gallons
	Trough, Insulated, Installed	EA	\$2,000.00	75%	\$1,500.00	
Livestock Well*	Drilling, casing & sealing, pipe to well head	EA	\$10,000.00	75%	\$7,500.00	
	Drilling, casing & sealing, pipe to well head	EA	\$7,500.00	100%	\$7,500.00	Available for feeding operation adjacent to streams where ESA listed fish are present and livestock will be excluded
Fish Screen	Screen, Installed	EA	\$500.00	75%	\$375.00	Livestock water only
Structure for Water Control	Diversion	CY	\$3.50	50%	\$1.75	Nte \$1,750 cost-share
	Rock, Placed	CY	\$50.00	50%	\$25.00	Streambank Stabilization Nte \$2,000 cost-share
Feed Area Rocking	Rock, Placed & Geo-textile fabric	CY	\$50.00	50%	\$25.00	Nte \$2,000 cost-share
Cross Fencing	Easy Terrain	FT	\$2.50	50%	\$1.25	Maximum cost-share paid for cross fence shall not exceed \$7,500 per cooperator per year.
	Moderate Terrain	FT	\$3.25	50%	\$1.63	
	Difficult Terrain	FT	\$3.75	50%	\$1.88	
Riparian Fencing	Easy Terrain	FT	\$2.50	75%	\$1.88	
	Moderate Terrain	FT	\$3.25	75%	\$2.44	
	Difficult Terrain	FT	\$3.75	75%	\$2.81	
	Easy Terrain	FT	\$2.50	100%	\$2.50	100% not to exceed cost-share rates will be paid according to District Policy
	Moderate Terrain	FT	\$3.25	100%	\$3.25	
	Difficult Terrain	FT	\$3.75	100%	\$3.75	
Protection Fencing	Fence around water developments	FT	\$4.00	75%	\$3.00	Nte \$1,000 cost-share
Corral Fencing	Corral fence including gates	FT	\$10.00	75%	\$7.50	
Direct Seeding	One or Two pass system	AC	\$50.00	50%	\$25.00	Nte 60 acres. See policy for requirements & restrictions.
Pasture/hayland planting	Seedbed Prep, Seed and Seeding	AC	\$100.00	50%	\$50.00	Maximum 100 acres per cooperator per year
Tree Planting	Shrub or Tree and Planting	EA		75%		Amount determined by board
Windbreaks				50%		Amount determined by board
Livestock/Equipment Crossing	Culverts, rock and dirt work	EA	\$2,000.00	75%	\$1,500.00	
Multi-purpose pond	Earthfill and excavation	CY	\$3.50	50%	\$1.75	Nte \$1,500 cost-share
Sediment basin	Earthfill and excavation	CY	\$3.50	50%	\$1.75	Nte \$1,500 cost-share
Terrace	Terrace construction, all types	FT	\$0.34	50%	\$0.17	
Grassed Waterways	Earthmoving, grading and shaping	FT		50%		Amount determined by board
Critical Area Planting	Site Prep, Seed and Seeding	AC	\$125.00	50%	\$62.50	

The District Board of Supervisors approved Cost-Share rates on March 8, 2007.
Contact the District staff if you are interested in applying for cost-share or have any questions.

LIVESTOCK PROJECTS WANTED

The District has the ability to apply for cost-share from the WA State Conservation Commission to address livestock issues, however funding is competitive and projects must be ready to proceed when funding becomes available. Our goal is to work with landowners to design projects that will enhance livestock operations while improving natural resources, especially water quality.

There are a wide variety of practices that can be implemented with this funding. Below are some of the projects that we have implemented with livestock funding in the past. If you are interested in these types of projects, contact Cheryl at the District ASAP!!!



YOU ARE INVITED:

LANDOWNER APPRECIATION BBQ



The District will be hosting a landowner appreciation BBQ on April 11th at 6:00 pm at the Moose Lodge in Clarkston. We want to take this opportunity to recognize landowners who have implemented conservation projects throughout the years. We will also be discussing programs available for future project implementation. Please RSVP by April 4th so we will have plenty of food for everyone! We look forward to seeing you there!

Yellow Flag Iris

Iris pseudacorus

Weed Biologists in Asotin County are on the lookout for a strikingly beautiful, five-foot tall yellow iris. Its large, showy yellow flowers make yellow flag iris easy to spot during late spring or early summer bloom. This escaped ornamental competes with native marsh plants thus altering the available habitat for native wildlife. Because of its ability to form dense single species stands it has been added to the invasive species lists of seven other states besides Washington.

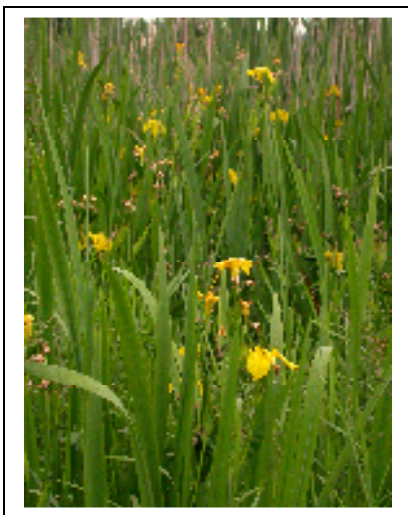


Yellow flag iris is the only all yellow iris that can be found throughout wildlands in Washington. Each flower resembles a common garden iris with 3 large (1–3") downward facing yellow sepals (outer 'petals') and 3 smaller upward pointing petals. The sepals may be streaked with brownish/purplish lines. The stiff sword-like leaves may be 1 ½ to 3 feet long and up to 1 ½" wide. The plant, including the flower stalk, may grow up to 5 feet in height. The distinctive looking reddish colored seeds are disc-shaped and about ¼" across. The germination rate in the wild is low and the plants spread primarily by fragmented rhizomes.

Yellow flag iris was originally imported as an ornamental in the early 1900's. It has also been used in sewage treatment plants to collect sediments and to remove heavy metals from wastewater. Because of the large amounts of glycosides (found in all parts of the plant) it is poisonous to grazing animals. Care should be taken when working with this plant, since the resins in the leaves and rhizomes have been shown to cause skin irritations in sensitive people.



This species can be effectively controlled with herbicides. However, since it grows in wetlands, care must be used to follow all regulations regarding pesticide use. If you identify yellow flag iris on your property, please contact the Weed Office for help with control options.



This invasive iris has only been found in one location in Asotin County. Thus far the infestation seems to be limited to a small pond off of Hwy 12, just west of Evans Road. Because of the plant's ability to change siltation rates and its potential impact to native wildlife and juvenile fish rearing habitat, landowners need to be able to identify this species when the population is still small and thus treatable.

Please call the Weed Office
for more information: (509) 243-2098

Submitted by:
Nelle Murray, Coordinator
Asotin County Noxious Weed Control Board



SMALL ACREAGE PROGRAM

The Asotin County Conservation District has recently developed a program to assist landowners with addressing resource concerns on properties with 1 to 20 acres. Financial & technical assistance is available. To receive financial assistance the property must be located within the District boundaries.

There will also be a series of FREE workshops conducted throughout the year. If you missed the "Pasture Management" or "Windbreak Installation" workshop, there are handouts available at the District Office. If you have any ideas or requests for future workshop topics please let us know.

Landowners interested in the small acreage program or would like notification of our future workshops; please contact Sandy at the District at 758-8012.



COMMUNITY WILDFIRE PROTECTION PLAN



The Asotin County Community Wildfire Protection Plan (CWPP) was completed and adopted by the County Commissioners in 2007. During the process of developing the CWPP several projects and areas of concern were addressed. The plan identified priorities for the protection of life, property and critical infrastructure in the wildland-urban interface. One major area of concern is the lack of fire protection for almost half of the county, which includes the majority of the privately owned land.

The steering committee met on January 9, 2008 to start the "community" process. Landowners at the meeting identified "communities" on a map. The next step is to write community wildfire protection plans for each of the identified areas. We encourage all landowners who live or own property in these areas to participate in this process. These areas include the Snake River corridor, Cloverland, Anatone (rangeland) and Anatone (timber and south to the Oregon border). The map is available for review at the District office. Currently, lists of landowners and residents are being created for each of the identified areas. The next step will be for the landowners within a community to meet and start the planning process. WA Department of Natural Resources will be assisting with the development of the plans.

To learn more about the Community Wildfire Protection Plan, contact Megan at the District. A copy of the Asotin County CWPP is available electronically on the Asotin County website under "Community Links". http://www.co.asotin.wa.us/community_links.htm



HELP US SERVE YOU BETTER

*Is this the first newsletter you have received?
Do you want to be added to our mailing list?*



Please contact Megan at the District